



# AUDLEY

## **CONTENTS:**

INTRODUCTION TO THE TOUR

MAP OF JORDAN AND ISRAEL

DAY BY DAY SUMMARY OF YOUR TRAVEL ARRANGEMENTS

QUOTATION

WHY TRAVEL WITH US

ITINERARY IN DETAIL

ACCOMMODATION INFORMATION

GENERAL INFORMATION

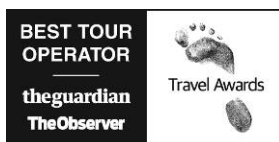
AITO QUALITY CHARTER



New Mill, our offices in the Windrush Valley  
on the edge of the Cotswolds



Daily Telegraph  
**BEST SMALL  
TOUR OPERATOR  
2009**



*We are proud to have received a number of awards over recent years. We have been the Daily Telegraph Ultra Travel Best Small Tour Operator winner and runner-up for the previous two years and, similarly, have been the winner or runner-up of the Guardian and Observer's Best Small Tour Operator award for the past four years as well as featuring in Wanderlust magazine's Top 10 Tour Operators for the past eight years.*

*These awards are widely recognised as being the most respected in the travel industry as they are professional surveys of the publications' readerships. With over 500 tour operators for you to choose from in the UK alone, we hope you find these awards are an additional reassurance of the quality of service you can expect from Audley.*

---

# AN INTRODUCTION TO OUR JORDAN & JERUSALEM TOUR

This fascinating journey takes in many contrasting highlights of a complex region, rich in history and culture. Petra and Jerusalem are the obvious, box office highlights, but there is so much more to enjoy on the itinerary.

Starting in Amman, the modern and laid-back Jordanian capital, you'll explore the city in a guided walking tour, before heading on to see the incredibly well-preserved Roman city of Jerash.

En route to Petra, the group will travel down the Kings' Highway. In addition to being an extremely scenic route, travelling this way will allow the group to see Mount Nebo, where the great patriarch Noah is said to have died, the mighty Crusader Castle of Kerak, and the historic mosaics in the town of Madaba.

The city of Petra needs no introduction, and you'll spend two whole days exploring the extensive site with your guide. The group then continues to the scenic splendours of Wadi Rum, where you'll spend the night in a Bedouin style camp. This is comfortable, with each tent having beds; there is hot water and toilets on site as well. The next day you move onto Dana Nature Reserve, where there are opportunities for light trekking in this beautifully scenic part of the country. The group then crosses the Allenby Bridge to Jerusalem, spiritual centre of three of the world's major religions.

Over your three nights in Israel, you will experience the contrast between Old & New Jerusalem and visit some of the holiest sites on the planet, including a half day tour of Bethlehem.

Having drunk your fill of Jerusalem, you'll then cross back into Jordan where you relax and contemplate what you've seen by the Dead Sea. Here you have a choice of two hotels – the Holiday Inn which is perfectly adequate, or for those that want to spoil themselves there is the option of the Kempinski.

Our group will have the services of a Jordanian guide up until the Israeli border; they will then hand over to an Israeli guide for your time in Jerusalem. The maximum size of the group will be 16.



Jerash, Jordan

## Climate

Travelling at the end of May in most places the weather will be warm, but not uncomfortably so, with temperatures in the mid to late 20s, and low humidity. The Dead Sea, being below sea level, will be warmer and more humid. Days should be clear and sunny.

## Your Specialists For This Tour

Harry Ring will be coordinating this tour, covering all the sights included in this itinerary.

Harry grew up in Oman, where his father helped to set up the veterinary services in the emerging Sultanate. He read Arabic and Spanish at Edinburgh University, before working for a time as an interpreter in Iraq. Six months studying in Egypt and recent research trips to Syria and Jordan have enhanced a comprehensive knowledge of the area.





## MAPS OF THE REGION



## DAY BY DAY SUMMARY OF TRAVEL ARRANGEMENTS

DAY	DATE	ITINERARY IN BRIEF	ACCOMMODATION ARRANGEMENTS
1	<b>Saturday 19 May 2012</b>	After the flight from London to Amman, you will be greeted and driven to your hotel for a two night stay.	Al Qasr Metropole, Amman 1 x Superior Room
2	<b>Sunday 20 May 2012</b>	In the morning, the group will have a fascinating walking tour of Amman. Driving north, there'll be a taste of rural Jordanian life with a stop for lunch in Rassoun. Then it's on to the impressive Roman ruins of Jerash, before you are dropped off back at your hotel in the evening.	Al Qasr Metropole, Amman 1 x Superior Room – Breakfast and lunch are included
3	<b>Monday 21 May 2012</b>	An early start this morning as it's around five to six hours drive down the 5,000 years old King's Highway to Petra. En-route the group will stop to see Mount Nebo, with its spectacular views over the Dead Sea; the Christian mosaics of Madaba; and the crusader castle of Kerak. Your hotel in Petra is your base for the next three nights.	Beit Zaman, Petra 1 x Standard - Breakfast is included
4	<b>Tuesday 22 May 2012</b>	Today you will enjoy a full day guided tour of Petra. Although it is undoubtedly one of the highlights of the itinerary, it can be hot and tiring, so be prepared for an inspiring but energetic day!	Beit Zaman, Petra 1 x Standard - Breakfast is included
5	<b>Wednesday 23 May 2012</b>	Another day to explore Petra with your guide. In the afternoon you can explore the smaller site of Little Petra, about 10 minutes drive away, and in the evening you'll receive an introduction to Jordanian cookery and a fine meal at the Petra Kitchen.	Beit Zaman, Petra 1 x Standard – Breakfast and dinner are included
6	<b>Thursday 24 May 2012</b>	An early start as you journey south from Petra to explore the sensational landscapes of Wadi Rum, staying overnight there.	UTA Camp, Wadi Rum 1 x Tent in private campsite – Breakfast and dinner are included
7	<b>Friday 25 May 2012</b>	Transfer from Wadi Rum to the Dana Nature Reserve, where you can enjoy a scenic hike around the Feynan Lodge. This rugged, Bedouin inhabited countryside is one of Jordan's most peaceful and wildlife rich areas.	Feynan Lodge, Dana Nature Reserve 1 x Standard Room – Breakfast, lunch and dinner are included

DAY	DATE	ITINERARY IN BRIEF	ACCOMMODATION ARRANGEMENTS
8	<b>Saturday 26 May 2012</b>	Today will be varied and exciting, beginning with a transfer to the border with Israel, where the group will go through the crossing formalities. Once in Israel you'll meet your new driver and guide for the journey on toward Jerusalem. After checking into your hotel, you'll be taken to watch the new Sound & Light Show at the Tower of David Museum.	Dan Boutique, Jerusalem 1 x Standard room – Breakfast is included
9	<b>Sunday 27 May 2012</b>	A full day guided tour including New Jerusalem and Bethlehem. In New Jerusalem, highlights will include the Menora at Knesset, Yad Vashem Holocaust Memorial and the Israel Museum. Moving on to Bethlehem you'll take in Manger Square, the Church of Nativity and Shepherd's Field.	Dan Boutique, Jerusalem 1 x Standard room - Breakfast is included
10	<b>Monday 28 May 2012</b>	Your full day tour of Old Jerusalem and the Mount of Olives explores the Garden of Gethesemane, the Western Wall, Via Dolorosa and the Cardo.	Dan Boutique, Jerusalem 1 x Standard Room – Breakfast is included
11	<b>Tuesday 29 May 2012</b>	This morning the group will be taken back to the Allenby Bridge to cross back to Jordan. En route you'll stop at Masada, a site of great historical and contemporary interest. Once in Jordan you'll be driven the short distance to the Dead Sea, with the rest of the day at leisure to relax.	Holiday Inn Dead Sea, The Dead Sea 1 x Standard - Breakfast is included
12	<b>Wednesday 30 May 2012</b>	A further day to relax by the Dead Sea.	Holiday Inn Dead Sea, The Dead Sea 1 x Standard - Breakfast is included
13	<b>Thursday 31 May 2012</b>	An early start to transfer to the airport for your flight back to the UK.	



Jerusalem, Israel

## QUOTATION

<b>Arrangements as specified per person</b>	<b>£2,995</b>
Single supplement	£895
Upgrade to Kempinski Ishtar, Dead Sea, for two nights per person	£90
Upgrade to Kempinski Ishtar, Dead Sea, for two nights, sole occupancy of room	£180
Per person deposit required to confirm these arrangements	£500

Please note if you confirm your booking within 60 days of the departure date full payment is required at the time of booking.

### TOUR HEALTH & FITNESS REQUIREMENTS

To ensure that all participants get the most out of the tour, it is important that you are fully aware of the level of activity and fitness and medical health required to successfully complete this itinerary. Please read this dossier carefully prior to confirming your place on the tour, and having established the facts, it is your responsibility to contact us with any concerns regarding individual levels of fitness, health or ability. Please be aware that our tour leaders have the right to exclude customers from the tour if they feel they are not sufficiently fit, healthy or able to complete the tour without affecting its safety, comfort or smooth progress. If you would like to discuss any of these issues further please call Ben on 01993 838 217 to discuss in more detail.

### ACTIVITY LEVEL – MEDIUM

A reasonable level of fitness is required for this trip. There are some relatively long journeys and some active days of sightseeing, particularly in Petra and Dana Nature Reserve. In particular you should be prepared for the following:

- To join all day walking tours of cities, monuments and historic sites. It is advisable to wear sturdy walking shoes and take care as the ground is often broken and uneven.
- Long coach journeys between Petra, Wadi Rum and Dana Nature Reserve. On this day a significant amount of your time will be spent in the small coach, although with plenty of stops for sightseeing.
- Light trekking in Dana Nature Reserve. Most of the hike is over very comfortable terrain.
- To carry your own luggage through airports and from your vehicles to the hotels and vice versa.
- Long days in the sunshine. It is likely to be very sunny for most of your trip and many of the locations visited do not offer a lot of shade. A sun hat and sunscreen are an absolute must.

### NOT INCLUDED IN THE PRICE

- Local airport departure taxes - payable locally on each departure.
- Items of a personal nature such as laundry, drinks, etc.
- Travel Insurance
- Meals not indicated within your itinerary.
- Tips for your guide and driver (discretionary).
- Any camera or video fees at any sites.
- Entrance fees and other costs when on 'free time'

## TRAVEL INSURANCE

We strongly recommend that you and all members of your party are adequately insured, protecting against unforeseen circumstances that could otherwise spoil your travels. Cover should include medical expenses and repatriation in the event of accident or illness. In addition, we strongly recommend that you have cover for personal belongings, delay at your outward or homeward point of departure, personal liability, overseas legal expenses and cancellation. If you are undertaking any sports or adventurous activities, including trekking, on your trip you should also make sure that your policy covers these. Please also ensure you read the policy conditions and exclusions.

The type of trips we create and the requirements of Audley clients vary greatly. We have therefore listed on our General Information page (at the back of this dossier) a number of providers who offer policies which may suit these varying requirements. You can find a more comprehensive list, including links to the providers' websites, at [www.audleytravel.com/insurance](http://www.audleytravel.com/insurance). Other providers and policies are also available. We are unable to provide you with more detailed information and you should contact the provider concerned directly for this.

Please note, this is general information only. We are not providing any specific advice on travel insurance or recommending any particular policy or insurer.

## HOW TO BOOK

If you are happy with the arrangements outlined within this itinerary and would like to book, please forward your completed booking form and the deposit specified above. If you would like to revise the itinerary, feel free to contact me and I can prepare another version which will hopefully match your requirements. The deposit can be paid by cheque, bank transfer or credit / debit card. Please make cheques payable to Audley Travel.

*On occasions, we may be asked by suppliers to make payment to them earlier than normal. Such requests may, for example, be made in order to secure flights, accommodation and other services during periods of peak demand. Whilst suppliers may have no contractual right to make such requests, failure to comply with them may result in the loss of confirmed arrangements. Where this situation arises, we reserve the right to ask you to make payment of the requested sum within a stipulated period and prior to balance due date. We will of course endeavour to avoid doing so if we can. Any such part payment will be treated as part of your deposit for the purposes of our terms and conditions.*

## PAYMENT BY CREDIT CARD

Please note that we do not charge a fee on deposit payments by credit card, except when a deposit is more than 15%. In this situation a charge will apply. Credit card fees are detailed on the booking form. We charge a credit card fee due to the high fees charged to tour operators by the credit card companies. We have chosen to make this transparent rather than including it within the trip price. You may therefore wish to pay the balance by bank transfer, debit card or personal cheque.

## VISAS

Jordan                      British Passport holders can purchase a visa on arrival in Jordan for JD10 per person

Israel                        British passport holders will be able to obtain a visa at the Israeli border. If you have travelled elsewhere in the Middle East, you may be questioned; if you have been to Syria, Iran or other countries that are openly hostile to Israel this questioning may be more prolonged. The best course of action is to tell the truth, explain why you were in these countries, and keep calm. In most instances you will be let in without any problems, though it may take a while.

Please note that some Middle East countries will deny entry to any visitors that have passport stamps from Israel, or any evidence of having visited. Israeli border officials will sometimes issue a separate, paper visa to avoid this if necessary - you just need to ask for it, and provide some justification (such as I have a holiday booked to Syria; I am due to be on business in Lebanon). Whether this request is granted depends entirely on the whim of the immigration official, and certainly can not be guaranteed. This is quite a complicated area so please speak to your specialist for more information if you are planning to travel elsewhere in the Middle East subsequent to your trip to Israel.

Important Note: We cannot under any circumstances guarantee that your visa application for any country will be accepted. However, in our experience refusals are extremely rare. Visa information is given in good faith and is accurate to the best of our knowledge.





Jerusalem, Israel

# WHY TRAVEL WITH US?

## REPUTATION & QUALITY

Well over 80% of our clients have travelled with us in the past or have had Audley recommended to them. When you book with us you are assured of quality arrangements if only for the fact that we simply cannot afford to risk our excellent reputation. Our service has been recognised by the readers of well-known publications including the Guardian & Observer, the Daily Telegraph and Wanderlust magazine, where we have consistently featured in their 'best tour operator' awards for a number of years.

## PERSONAL SERVICE

We are committed to offering you a very personal service, with all your arrangements being handled by one country specialist. They will remain your one point of contact and will take responsibility for the smooth operation of your trip. They are supported by a team of specialists for that region and a professional administration and management team.

From the moment you contact us, we are here to answer your questions accurately and honestly, be they about specific arrangements or any more general queries you may have. We are experienced travellers with a thorough and in-depth knowledge of our specialist destinations, and the benefit of this experience is yours throughout. When we do not know the answer to a question we will endeavour to find out and get back to you as soon as possible.

## QUALITY SERVICE WHEN YOU ARE TRAVELLING

We take a good deal of care when choosing our travel partners overseas, taking into account their quality of service, guides and vehicles. We have built up many long-standing relationships, ensuring that they deliver the level of service demanded by Audley clients. Our local guides and drivers, where appropriate, are the people you will meet. In many cases we know them personally, in all cases we ensure that they are of the highest calibre. They are there to do much more than show you specific sights and provide factual information. They will be able to tell you about local life, culture, cuisines and customs; and, where applicable, act as translator. In certain parts of the world a specialist guide is more appropriate, for example, a wildlife expert.



First class guides

## A SMOOTH JOURNEY

We have procedures in place for dealing quickly and efficiently with mishaps from minor flight time alterations to more fundamental changes. If problems do occur we will rapidly rearrange your itinerary to make best use of your time given the changed circumstances, not simply cancel part of your trip or leave you sitting in an airport waiting for hours for a rescheduled flight. Importantly, in these situations we will do everything possible to minimise any extra costs involved – in the vast majority of cases no extra charges will be made. If a problem does occur while you are travelling you can contact us on our 24 hour number. We will do everything in our power to rectify the problem immediately rather than allow it to spoil your trip.

## DETAILED TRAVEL DOCUMENTS

Approximately two to three weeks before you travel we will send you all your travel documents presented in a convenient travel organiser. As well as your full itinerary and air tickets, there will also be additional information such as recommended restaurants and practical tips. A few days before you travel your specialist will call you to have a final talk through your itinerary and answer any last minute questions you may have.

## RESPONSIBLE TRAVEL

We have a firm commitment to minimising the environmental and social impact of travel, and strive to ensure that a visit from an Audley client has a positive effect on the destination. We have a firm commitment to the principles of 'responsible travel' and have been awarded AITO 5 star status (the highest achievable) for our policies and practises. We continue to work with AITO, and a number of other bodies, to improve our policies. For more details please refer to our website ([www.audleytravel.com/rt](http://www.audleytravel.com/rt)) where you will find details of our responsible travel policy and also our Travellers' Code. If you are particularly interested in these issues and wish to incorporate them into your itinerary, please do not hesitate to contact your country specialist: [thomas.stapleton@audleytravel.com](mailto:thomas.stapleton@audleytravel.com)



## LEGAL LIABILITY

We are a UK company and hence must fully comply with English law. When booking with us you can rest assured that your arrangements are carefully planned as we have a reputation to maintain and are legally liable for any omissions or negligent acts. You may not find you have this level of reassurance if you make your own travel arrangements independently.

## CHARITY SUPPORT

Audley has been supporting carbon reduction projects through Friends of Conservation since 2005 and in addition to this each individual department also supports a charity of their choice with a yearly financial donation. This charity is one that is close to their hearts and the team often chooses to fundraise to add to this amount. Please ask your specialist if you would like to find out more as in most instances they will have visited the charity themselves, or one of their colleagues will have.

### THE HANNAN SCHOOL AND AUDLEY'S CONTRIBUTION

Having researched numerous voluntary organisations throughout their region, the Middle East team voted to support the charity Hannan School in Morocco. Impressed with the charity's strong vision of providing a better education and improved welfare to a small Berber community in the remote Middle Atlas Mountains, the team was also keen to support a small organisation, locally based to our offices in Witney, with which they could build a strong and lasting relationship.

The charity founders, Hannah and Hmad Naatit, kindly came to the office to meet the team and introduce them to the Hannan School. As they explained, a recent World Bank report quoted Morocco as having one of the worst standards of education in the Arab world. To help combat this problem Hannan has recently purchased a building in the village of El Borj and at the time of Hannah and Hmad's visit was in the process of converting it into a pre-school and community centre to provide a good standard of easily accessible education for the local community. Keen to support this project the Middle East team organised a souk style cake and craft sale and an auction for a weekend in Morocco and raised over £500. This donation, combined with the annual donation from Audley, enabled Hannan to install the essential water pipes and lavatory facilities in the pre-school and also provided a first aid kit and training. Hannan has now finished the pre-school preparations, the appointed teachers have received training and the school is welcoming it's first pupils this year.



Children who receive sponsorship to attend school in El Borj

Hannan is now working towards improving the education of the older children in the community. The nearest secondary school to El Borj is located in Khenifra, a school journey of 10 kilometres with no transport provided. Whilst some children stay with relatives in the town many have no option but to drop out of school at an early age. Hannan has therefore started to fund raise for the purchase of a school bus, the provision of which would prolong the education of many students. Audley Travel will contribute towards the purchase of the school bus from it's charity trek to the summit of Mount Toubkal, taking place in May this year. In addition to these projects Hannan also currently sponsors over 60 local children through their education. A monthly donation of £10 provides a child with books, equipment and clothes and there are over 150 children in the area who will greatly benefit from this scheme. The Middle East team has been sponsoring a young boy called Abed Rahim for the last couple of years and hopes to be able to continue this support in the future.

**If you would like further information please speak to your Middle East Specialist or visit [www.hannan-school.com](http://www.hannan-school.com). There will also be the opportunity for Audley clients to visit the Hannan project in El Borj if their itinerary takes them between Fez and Marrakesh by car.**



Citadel, Amman

## YOUR ITINERARY IN DETAIL

**Saturday 19  
May 2012**

### LONDON TO AMMAN

British Midland flight - Flight No: BD917 - Dep: 1350 - Arr: 2105 - (same day); Class: Economy Class; Non-stop flight;

Please note: flight schedules for 2012 are not yet published so times are subject to change

### Jordan Introduction

Jordan is a country that bears witness to centuries of different rulers, civilisations and cultures. Romans, Arabs and crusaders have all left indelible marks on the landscape, but it is the little-known Nabateans who have made Jordan such a sought-after destination, for it was they who built Petra. This amazing city, carved from the rock, has been drawing tourists for over 100 years, since its "rediscovery" by John Louis Burckhardt. As well as the wonderful cultural heritage, Jordan also has another major draw: the land itself. From the deep, dense and curative waters of the Dead Sea, to the shifting sands and red mountains of Wadi Rum, there is stunning scenery at every turn. Finally you have the Jordanians themselves: friendly and helpful, eager to show-off their country. All these combined make Jordan an amazing place to visit.

### Amman Introduction

Amman is the capital of Jordan, and today presents a modern, bustling face to the world that belies its history. Known in the Graeco-Roman era as Philadelphia, remnants of this time can be seen in the citadel complex and the Roman theatre. The Roman theatre is a wonderful example of its kind, cut into the hillside and seating 6000. It is still used to this day, hosting a major annual folk music festival.

The citadel sits atop one of Amman's seven hills, and is the site of the Roman temple of Hercules: today towering twin columns remain, framing the view over downtown Amman and a beautiful black and white mosque. Also on the hilltop are the remains of an early church and mosque, as well as the National Archaeological Museum which houses a good collection of artefacts.

Generally, aside from these ruins the remainder of Amman is a chaotic city, where modern, chic boutiques sit side-by-side with shwarma stalls selling chicken kebabs: although not very attractive, it is a vibrant town city and boasts some good restaurants.

As well as having some notable monuments of its own, Amman is also the prime entry point into Jordan and a good base for exploring the sights of the north.





The Roman theatre, Amman

### SHARED TRANSFER FROM AIRPORT TO HOTEL

*transfer by shared vehicle with driver and guide*

You will be met by a representative from our ground agents who will be holding a board with your name on it just outside the exit and transferred to your hotel.



**Al Qasr Metropole, Amman**  
Breakfast is included

### AMMAN WALKING TOUR, RASSOUN & JERASH

*shared excursion with an English speaking guide*

Amman, once the site of the ancient city of Philadelphia, has been the capital of Jordan since 1921, and has grown steadily in that to over two million residents. A great way of getting to know it is to take a walk through its main attractions, something that often flies in the face of Jordanian convention - citizens will drive even the smallest of distances rather than use their feet - but such is Amman's position, nestled amongst seven hills, that as you walk around it can sometimes open up to spectacular views of the whole city.

The walking tour begins near the Wild Jordan Cafe, owned by the RSCN who are responsible for the Nature Reserves in the country, not least of which is Dana. From here one follows a series of steps and begins a descent into the old quarters of the city. On the route, one sees a slice of a more traditional Amman, with old buildings and souqs on either side until reaching Hashem restaurant. The restaurant is famous for its excellent and cheap Arabic food - falafel and hummous are specialties, and celebrated clientele include the King of Jordan himself!

Nestled among a forest of oak and pine trees, Rassoun is a quaint village about 20 minutes drive from Ajloun. The Rassoun Nature Reserve is home to several centuries-old olive trees, the Arabic Calligraphy Institute and the Orjaan Soap House. Lunch in Rassoun, a simple but generous home-cooked meal, is served in the home of Abu Baker and his family. Abu Baker, a retired army officer, has built a modest living room and kitchen (with facilities) on top of his house, where he entertains paying guests to a typical Jordanian meal prepared by his wife and daughters.

Located about an hour outside of Amman, Jerash is one of the real highlights of a trip to Jordan. It is one of the best-preserved Graeco-Roman cities in the Middle East, although it traces its origins right back to Neolithic times. As a member of the Decapolis, a Byzantine trading federation of ten cities, Jerash became a prosperous place, and many grand public works were undertaken. Today, amazing ruins remain of temples, agora, and colonnaded streets.

The most impressive ruins are those of the main street, where colonnaded facades line the cobbled road, under which runs a large sewage duct. At key points are decorative fountains, such as the Nymphaeum, whilst behind the facades the storage areas of old shops can be seen.

**Sunday 20  
May 2012**



Of the temples, that of Artemis is the most impressive, and has a small forest of beautiful columns in front of it, topped with perfect Corinthian capitals. Off to the side of the main heart of the city are a couple of Byzantine churches, in which are some excellent mosaics that have weathered remarkably well.

After such a varied day, you'll be dropped back at your hotel to relax for the evening.

 **Al Qasr Metropole, Amman**  
Breakfast is included

**Monday 21  
May 2012**

### **AMMAN TO PETRA VIA MADABA, MOUNT NEBO & KERAK**

***transfer by shared vehicle with driver and guide***

You will be collected from your hotel this morning by your driver and guide for the journey to Petra.

On the way you will visit both Madaba and Mt Nebo. Madaba is a largely Christian town, and is home to several churches: in one of these, the Greek Orthodox church of St George, is the principal reason for your visit. It is a 6th century mosaic map of the Holy Land, depicting Jerusalem and other holy sites. The level of detail is remarkable, with city walls, gate and pilgrims all picked out in bright-coloured tiles, making this one of the finest mosaics in Jordan. Some other excellent examples are to be found at Madaba's Archaeological Park, which contains a church which survived into early Islamic times. An interesting feature of Madaban mosaics is that much of the artistic tradition continued unabated into the early Islamic era, meaning that the transition to an individual Islamic art style was somewhat more gradual than it was first thought.

Mount Nebo is the site from which Moses first saw the Holy Land at the end of the Exodus. It is also the presumed site of his death and burial. A Byzantine basilica church now stands on the spot which commands stunning views over the Jordan Valley. Excavations have revealed some amazing mosaics, and the church played host to a poignant visit by Pope John Paul II shortly after the millennium. Unfortunately the church is currently closed for repairs, but the spectacular views over the Holy Lands remain a strong reason to visit Nebo.



Kerak Castle, Jordan

After visiting these two churches, which form part of the 5,000-year old King's Highway linking Amman to the south of the country, you continue south. Your final visit is to the Crusader Castle of Kerak.

As you approach the castle of Kerak, it is immediately obvious why all the armies involved in the crusader conflicts wanted control of this bastion. Kerak represents the best aspects of both crusader and Islamic military architecture, as the Mamlukes refined the original structure built by the Christian knights.

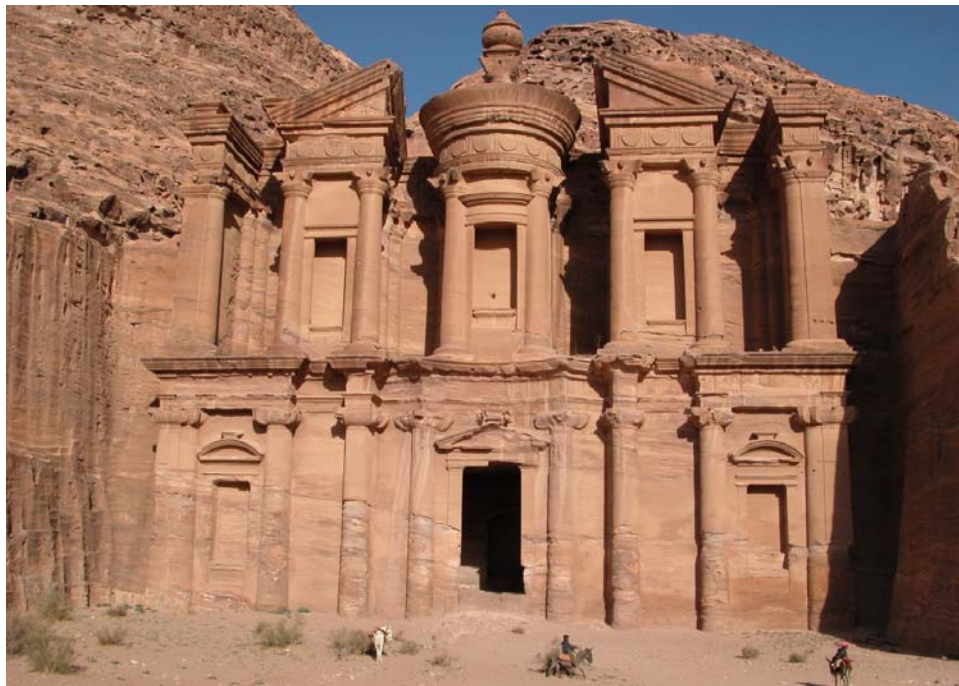
Inside stone-vaulted halls and chambers, both above and below ground, beg to be explored, and echo now to the quiet commentary of guides rather than the harsh cries of war that once resounded through Kerak.

From Kerak you continue to Petra. With all the sightseeing, your journey down to Petra will occupy your whole day today.


### Petra Introduction

Petra is the legendary city of the Nabateans, dramatically concealed behind a wall of mountains pierced only by the Siq canyon. Visitors to Petra normally stay in the town of Wadi Mousa, which has grown up near the entrance to the site, and is well-g geared towards accepting visitors, with souvenir shops, internet cafes and hotels in abundance. On a ridge overlooking the valley and town are more hotels: no longer in walking distance of Petra itself, but with wonderful views.

A visit to Petra is the cornerstone of any trip to Jordan, and will be an experience you are never likely to forget. Petra is one of those places everyone should try to visit during their lifetime.



The Monastery, Petra

 **Beit Zaman, Petra**  
Breakfast is included

### DAY ONE AT PETRA

*shared excursion accompanied by your shared guide*

One of the major highlights of this or any other trip, as you get your first sight of the Rose City of Petra today. Your guide will spend the next two days taking you through the history and landmarks of one of the Seven Wonders of the Modern World.

The Nabateans were originally a nomadic desert tribe. Through the sands of Wadi Rum and Saudi Arabia, long camel caravans rode, carrying precious frankincense from modern-day Yemen to provide the vital sweet-smelling backdrop to Rome's pagan ceremonies. By controlling and taxing this route, the Nabateans grew wealthy, and began to put down roots, most dramatically at Petra, a city cut off from the rest of the world by sandstone mountains pierced only by the Siq canyon.

With the advent of Christianity, demand for frankincense failed, and slowly but surely Petra drifted into obscurity. For a thousand years it lay undisturbed and virtually unknown except to local Bedouin tribes, who strove to keep things that way. Then, in 1812, the Swiss explorer tricked his way into the site by asking the local tribes if he could make a sacrifice at the tomb of Aaron, located beyond the Siq, and reached through the city itself. Since then, people have been flocking to see the remarkable remains here.

**Tuesday 22  
May 2012**

Your tour begins with the walk down from the site entrance to the beginning of the Siq. This path is flanked with typical rock-cut tombs that are a very small precursor of the drama to come. The most impressive of these preliminary tombs is the Obelisk tomb. This is actually two tombs one on top of the other, the upper most being capped with four obelisks, and the lower displaying the typical classically-inspired façade of Nabatean tombs.

The Siq itself is one of the major highlights of any visit to Petra. Stretching for just over a kilometre, the narrow canyon is never more than about 10 metres from one sheer wall to the other. The rock is beautiful, layered bands of rich colours from deep reds through to golden yellows. Channels, built by the Nabateans, are still visible about a metre off the canyon floor, and were used to convey water into the city. Along the course of the Siq are numerous niches and alters - there is a theory that says the Siq's primary function was for worship, and the soaring rock, peaceful atmosphere and awe-inspiring surroundings do evoke similar feelings to a great cathedral.

The defining moment of your first visit to Petra is going to be your first glimpse of The Treasury tomb (Al Kazneh) through the end of the Siq. This vast tomb got its name because of a legend that said the king buried in it had secreted his treasure in the urn atop the tomb. This explains the pock-marks on the urn - successive grave robbers attempting to shatter the urn with their bullets and gain the treasure inside. Your guide will spend some time explaining the façade of the tomb: the symbolism, the means of construction, and the importance of tombs to the Nabateans. This explanation will stand you in good stead through the rest of the city, because the same motifs and designs are repeated throughout the site.



Wall of Tombs, Petra

Moving on into the city, you pass the Street of Facades, home to further tall, imposing tomb fronts, and wander through some of the smaller tombs, carved through the most amazingly coloured rock, with deep purple strata. You pass the Roman theatre, partly carved from the rock and turn the corner into the Roman section of the city. The remains of the colonnaded street are decorated by various temples and flanked by the Triumphal Arch and the Nymphaeum.

The Roman colonnaded street comes to an end in the sacred courtyard of the Qasr El Bint temple. This is a monumental temple, with the huge walls still standing and the bases of the four enormous pillars that formed the temple portico still in place.

Qasr El Bint sits nestled under the sheer face of the rugged sandstone hills that enclose Petra. Nearby are a couple of restaurants and the pathway that leads up towards the Monastery, and it is here that your guide will leave you. You are now free to go back over the city and explore at your leisure, or branch off and visit a previously unexplored area of the city. If you wish to hire a donkey for the steep climb up to the Monastery, your guide can help you do this before leaving you.



In terms of further things to explore, there are two main options, both of which require a fair degree of fitness as they involve steep climbs into the mountains around the site. One is the Monastery (Ad Deir). The path from beyond the restaurants climbs up a long, winding flight of hand-cut steps and eventually spills you out onto a plateau. Cut into a cliff is a tomb that rivals the Treasury for size. Dominating the plateau the huge façade is topped with an urn, like the Treasury, although overall, there is less ornamentation. The more austere monument is in keeping with its isolated spot on the plateau. From the edge of the plateau, views stretch over the vast Wadi Araba into Israel, and along the ridge of mountains to the one capped with the white dome of Aaron's tomb.

The other option is the High Place of Sacrifice. A signposted path leads up the side of the mountain by the Roman theatre. It is a steep climb and can take up to two hours to ascend and return. At the top you are greeted by a flat expanse of rock, the sort of exposed location the Nabateans loved for making their sacrifices. The outlines of a temple are carved into the plateau and the altar and channels for draining the blood are clearly discernable. From the edge of the plateau you get a wonderful birds-eye view of the city, and this is perhaps the best aspect of the High Place of Sacrifice. If you wish, rather than returning by the route you came, another path descends the opposite side of the plateau, past some interesting monuments.

 **Beit Zaman, Petra**  
Breakfast is included

**Wednesday 23  
May 2012**

## **DAY TWO AT PETRA**

### ***shared excursion accompanied by your shared guide***

After breakfast the group will enjoy your second morning exploring Petra with your private guide. There will be a number of the aforementioned highlights that you didn't have time to see yesterday, while it is always a pleasure to revisit favourite areas to appreciate them in a different light.

## **HALF-DAY VISIT TO LITTLE PETRA**

### ***shared excursion accompanied by your shared guide***

Around 10 minutes by car from Petra is the ancient suburb of Petra known as Siq al-Barid. It was used as one of the gateways into Petra and a place to pay 'admission taxes' and as a supply post on the caravan routes crossing the Middle East. The surrounding area is picturesque and the site seems to be missed by the great numbers of visitors that visit Petra itself. You enter the area through a little siq. At the end of this 400 meters long siq you come into larger areas which offer a splendid collection of temples, triclinia, tombs, houses and cisterns. Several cisterns carved into the rocks are still used today by local livestockers. One small triclinium still has some (badly faded) 1st-century fresco paintings with birds, floral motifs and classical mythological figures.

## **EVENING COOKERY LESSONS - PETRA KITCHEN**

### ***shared excursion***

Petra Kitchen is an authentic Jordanian cooking experience and a wonderful way to do something different with your time at Petra. Run by local men and women, and furnished entirely with locally-made goods, it is also a great way to put something back into the local economy while learning a bit more about the local culture. The real unique aspect is that you actually prepare the meal yourselves. Under the guidance of the local women you will learn how to make soups, mezze, salad and a traditional Jordanian main course, before sitting down to enjoy the fruits of your labour. The cost includes all of your soft drinks, however wine and beer are available at your own expense, just to ensure that the atmosphere is wonderfully convivial.



Cooking at the Petra kitchen

 Beit Zaman, Petra  
Breakfast is included

### PETRA TO WADI RUM

*transfer by shared vehicle with driver and guide*

The journey between Petra and Wadi Rum takes around an hour, and your driver will escort you to your campsite for the night.

**Thursday 24  
May 2012**



Wadi Rum

### Wadi Rum Introduction

Wadi Rum has some of the most spectacular desert scenery anywhere in the world. Lawrence of Arabia spent quite a bit of time here during the Arab Revolt, and many of the scenes from the film were shot here. Don't expect sweeping sand dunes: Wadi Rum is a landscape of bizarre, soaring rock formations, known as jebels.

The area is forbiddingly majestic, the only residents of the area are around 4000 villagers and Bedouin nomads, and the only buildings are goat hair tents, a few concrete shops and houses and the fort headquarters of the Desert Patrol Camps.



Around the village of Rum, there are a few things to see, Lawrence's Well; a spring 2km south of the village. It's really just a pool, but the views are stunning. There's a much prettier spring at the base of Jebel Rum. The Nabatean empire, responsible for Petra, left a ruined temple in Rum, and the area is covered in Thamudic and Kufic rock art.

The real attraction of this area is the desert itself, and you get out into it in a hired 4 wheel drive. Some people just do an hour or two but you can spend a night at one of the desert camps, where you enjoy a night under the stars and a bedouin feast.

### **JEEP TOUR OF SEVEN SIGHTS OF WADI RUM**

#### ***shared excursion with your driver only***

Wadi Rum is one of the great Middle Eastern wildernesses. Over the years it has provided a refuge to the hardy Bedouin who knew how to survive and thrive in its arid landscape. Many of Lawrence of Arabia's exploits unfolded here and more recently the harsh backdrop of fissured rock and red sand has doubled up as the surface of Mars in several films. Your tour today takes in seven of the sights of Wadi Rum and is a detailed exploration of the deeper recesses of the wadi.

At the entrance to the Wadi, near the modern visitors centre, you pass the fluted rocky hill known as the Seven Pillars of Wisdom, which gave its name to Lawrence's account of the Arab revolt. Nearby, in the lee of a steep cliff, are the remains of a Nabatean temple. Partially restored, the temple was probably used by Nabatean traders entering or leaving the wadi, presumably to pray for, or give thanks for, a safe passage.

Moving deeper into the wadi, past the settlement of Rum, the scenery opens up, and it matches Lawrence's description of "vast, echoing and God-like". Broad sweeps of red sand wash up against the base of rocky mountains and cliffs underneath a curving blue sky. Heading for one of the monoliths of fissured rock, you walk into a narrow canyon where the walls are etched with Thamudic inscriptions, the language of pre-Islamic Arabia. The inscriptions and depictions of camels suggest that the canyon was used as a refuge from the hottest part of the day, and also served as an information centre giving details of the nearest water and similar advice.

Nearby is one of several rock-bridges in Wadi Rum. The easily eroded sandstone has been subject to millennia of scouring winds, boring a tunnel through the rock, leaving a natural bridge above. The next stop, even further into the wadi is another rock bridge - higher, and with a slightly shorter span. For the more adventurous, the lure of scrambling up these bridges and enjoying the unrivalled view and silence is hard to resist.

You now begin to loop back towards the entrance of the wadi. A small, largely ruined, fort nestles up against a huge boulder - this is called Lawrence's Castle, but whether or not he ever used it is questionable. It doesn't look big enough to have served any defensive function. However it does provide you with a great view back up the branch of the wadi you have just descended. On the opposite side of this wadi branch is another collection of Thamudic inscriptions, these showing a lot in common with the rock-art found in north Africa. Animals, hunting scenes and shamanistic depictions are all etched into the rock.



Sunset, Wadi Rum

As well as taking in several sights of interest, the other great thing about this tour is that it gets you deep into the wadi, and the thrill of driving through this vast emptiness is hard to match. Your guide will be one of the local Bedouin: they do not act as a guide in the traditional sense; they simply know their way around Wadi Rum and can drive you from place to place. Most of them do not speak English, so there is no describing of the various sights. The vehicles are all 4x4s, and are fairly old as a rule. Most of the Bedouin cannot afford to purchase the latest 4x4 models, and in many cases would not want to: modern 4x4s, like modern cars, have complex engine management systems and when they break down have to go to a dealer to be fixed - not practical for desert-dwelling Bedouin! The older models have little, or no engine management, and are therefore much easier to repair with a bit of know-how and a few simple tools.

 **UTA Camp, Wadi Rum**  
Breakfast is included

**Friday 25  
May 2012**

### **WADI RUM TO DANA**

***transfer by shared vehicle with driver and guide***

This is a journey of around two hours.

### **DANA NATURE RESERVE INTRODUCTION**

Dana Nature Reserve is managed by the excellent Royal Society for the Conservation of Nature (RSCN). They protect and manage the nature reserve to encourage the proliferation of bird and animal species and with the added aim of providing both ecologically and financially sustainable jobs for people in the local communities. The nature reserve is a system of wadis and mountains which extends from the top of the rift valley down to the desert lowlands of Wadi Araba.

Dana village has been inhabited since around 4000 BC; there is evidence to suggest that Palaeolithic, Egyptian, Nabatean and Roman civilisations have all settled in the area, utilising the fertile soil, water springs and strategic location. Now a small agricultural community still lives here, concentrating on growing fruit and olives and on the small scale production of organic preserves.



Dana Nature Reserve

### 1/2 DAY WALKING ON TRAILS FROM FEYNAN LODGE WITH A LOCAL GUIDE.

#### *shared excursion with your guide*

You have the chance to explore the trails around the Feynan Lodge today. The walking is fairly easy as it is mainly on the flat, though sturdy footwear is advisable. During the hike there is a chance of spotting many of the 200 different bird species of the area and depending on the season seeing many wild flowers as well. Much of the walk will be a gentle stroll through Bedouin inhabited countryside.

 Feynan Lodge, Dana Nature Reserve  
Breakfast and lunch are included

**Saturday 26  
May 2012**

### DANA TO THE TO ALLENBY BRIDGE

#### *transfer by shared vehicle with driver and guide*

You will be collected from Dana and driven to the Dead Sea, a journey of about three and a half hours. Arriving at the Jordanian side of the border, you will need to complete the border formalities. You'll then be driven across the bridge, with other people to the Israeli side. Once the various formalities have been completed, you will be met by your guide.

The entire crossing time can take anything from 30 minutes to an hour or more, depending on the number of people crossing.

### Allenby Border Crossing Introduction

Named after the British general who captured present-day Syria and Israel and the Palestinian territories from the Ottomans in World War One, the Allenby Bridge is the border between Jordan and Israel.

**PLEASE NOTE – IF GROUP NUMBERS ARE SMALL THEN ALL SERVICES IN ISRAEL WILL BE WITH A GUIDE-DRIVER ONLY, RATHER THAN A DRIVER AND GUIDE.**

### ALLENBY BRIDGE TO JERUSALEM

#### *transfer by shared vehicle with driver and guide only*

After clearing border formalities, you will be met by your English speaking driver/guide, who will drive you onto Jerusalem. This journey takes around an hour.

### Jerusalem Introduction

Jerusalem is somewhere that many people feel they know, despite not having been there. The names, places and stories associated with the city and the surrounding area are instantly familiar - The Mount of Olives; The Last Supper; The Temple Mount; Bethlehem; The Wailing Wall; The Dome of the Rock.

A walk through the old city of Jerusalem is to take a journey through the history of civilisations and empires, with ancient Jewish remains, Roman streets, Crusader castles, and Mamluk mosques - all enclosed within Ottoman era city walls.



Jerusalem Old City, Israel

Jerusalem is not just a historical Disneyland though - it's very much a living, breathing city. Many Orthodox Jews still live within the Old City walls, as do many Muslims and Christians - there are representatives from most branches of the Christian churches here and you will see Orthodox Armenian priests, Egyptian Copts, Syriacs, Ethiopian Orthodox nuns, as well as Priests, Rabbis and Imams.

The Old City is divided into quarters, with each quarter having its own distinctive character. The lively Muslim quarter is the centre of life for predominantly Arabic East Jerusalem, with bustling markets and tea shops. The Christian quarter is a hotch-potch of different strands of the Christian church, drawing pilgrims from all over the world. The Jewish quarter is home to many Orthodox Jews going about their lives; whilst the Armenian Quarter pretty much keeps itself to itself.

Beyond the Old City, the new city of Jerusalem has a good selection of restaurants and bars on pleasant pedestrianised streets. There are also world class museums such as the Israel Museum (repository of the Dead Sea Scrolls), as well as the harrowing but touching Yad Vashem Holocaust memorial museum.

### SOUND & LIGHT SHOW AT THE TOWER OF DAVID

Watch the Tower of David come to life with a spectacular sound & light show. The story of Jerusalem unfolds in a blaze of images, characters and sound, with images and lights projected onto the walls, and archaeological ruins of the citadel.

There will be quite a lot of other tourists at this show but in our opinion it's one of the best sound and light shows in the Middle East.

 **Dan Boutique, Jerusalem**  
Breakfast and dinner are included

### GUIDED TOUR OF BETHLEHEM AND NEW JERUSALEM

*shared excursion with your driver and guide*

Today you visit Bethlehem, located in the Palestinian Authority. The Old City is found around Manger Square, and one of the highlights is the Church of the Nativity. This is one of the oldest churches in the world, and is built around a cave which is said to be Jesus' birthplace.

**Sunday 27  
May 2012**



The entire compound is actually built around two churches. Recently discovered mosaics from the original floor can be seen through a trapdoor in the Basilica of the Nativity - the present floor is raised several feet higher than the original. At the end of the church is a doorway leading down to the cramped cave, where a silver star marks the site of Jesus' birth.



Church of the Nativity, Bethlehem

The newer, adjoining Church of St. Catherine is where the Latin Patriarch of Jerusalem celebrates midnight mass. Although less steeped in history, it is nevertheless an attractive building and certainly worth a look. The narrow streets around Manger Square and the Old City have a relaxed feel and lend themselves well to an afternoon of wandering, shopping, and trying some of the local culinary specialities.

To finish your journey through history you'll take a drive through the 'new' city of Jerusalem to the Museum of Israel - home of the Dead Sea Scrolls, the oldest surviving version of the Bible. There's also a model of the city during the second temple period (around 500 BCE to 70 CE) - great for giving some context to what you'll have just seen.

 **Dan Boutique, Jerusalem**  
Breakfast and dinner are included

**Monday 28  
May 2012**

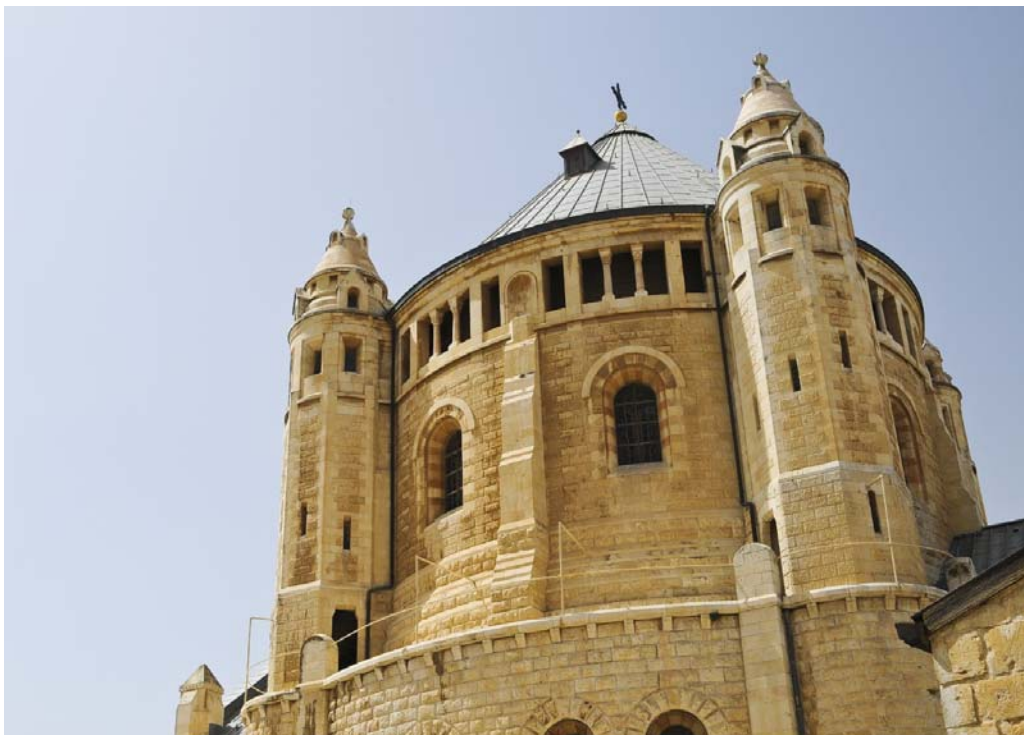
### **GUIDED TOUR OF THE MOUNT OF OLIVES AND OLD JERUSALEM**

#### ***shared excursion with your driver and guide***

You'll start today with a drive up to the Mount of Olives, for panoramic views over Jerusalem's old city. The Mount is has significance for both Christians and Jews, and is covered in Jewish graves, some dating back thousands of years.

Having orientated at the Mount of Olives, you'll be taken on foot into the Old City's maze of narrow streets and alleyways. You will start at the Temple Mount with the Wailing Wall, the Dome of the Rock and El Aqsa Mosques - all of which hold extraordinary significance for both Muslims and Jews. You'll continue with a stroll through the Old City's bustling bazaars - in the Jewish and Christian areas these tend to be shops and stalls aimed at tourists, but in the Muslim quarter they are still very much used by everyday people. You'll then move onto The Church of the Holy Sepulchre - taken by most Christians as the place of crucifixion as well as Jesus's tomb. You then finish up with a look at the Cardo - an excavated Roman street in the heart of the old city.





The Church of the Holy Sepulchre , Jerusalem

Please note that the Dome of the Rock and El-Aqsa mosques are not open to non-Muslims, and entrance to the grounds can be restricted as well. You may not necessarily visit things in the order mentioned above - your guide will determine the best order to see things in. Your guide will also be able to tailor this part of the tour to your particular interests.

 **Dan Boutique, Jerusalem**  
Breakfast and dinner are included

**Tuesday 29  
May 2012**

### **JERUSALEM TO ALLENBY BRIDGE VIA MASADA**

*transfer by shared vehicle with driver only*

You will travel via Masada, a hilltop site of ancient Jewish and Roman palaces and fortifications built by King Herod.

During the first Jewish revolt against Roman rule, rebel Jews overcame a garrison stationed at Masada. Following the recapture of Jerusalem by the Romans, large numbers of Jews fled the city to Masada, and became a base of resistance. Having regained control of the province, the Romans lay siege to the settlement, building a huge ramp of stones and earth supposedly over 100 metres high. However, once they had breached the walls, the conquering Romans found that the rebels had committed suicide en-mass, rather than fall into the hands of the enemy, finding over 900 bodies inside.

As well as being of great historical interest, Masada is significant within contemporary Israeli culture - The Chief of Staff of the Israel Defence Forces Moshe Dayan, initiated the practice of holding the swearing-in ceremony of soldiers who have completed their basic training on top of Masada. The ceremony ends with the declaration: 'Masada shall not fall again'.

From Jerusalem to the bridge via Masada will take around four to five hours, including time at Masada.

### **ALLENBY BRIDGE TO THE DEAD SEA**

*transfer by shared vehicle with driver only*

The Dead Sea is just a short drive of 30 minutes or so from the Allenby Bridge.

### **The Dead Sea Introduction**

Some 400 metres below sea level, the Dead Sea is famously the lowest point on earth. The mineral-laden waters are what allow people to float and even read newspapers and the like while supine in the waters, as it is impossible to sink. For many centuries these same minerals have given the waters and mud curative properties, and many people are positively evangelical about the benefits of a visit to the Dead Sea.

As well as the chance to bath and relax in these waters, the surrounding scenery is also impressive, rising some 1,300 metres into the stark Kerak and Madaba mountains.

Easily accessible from Amman, and far less developed and crowded than the Red Sea coast, we have always found the Dead Sea a fascinating place to visit and a wonderfully relaxing place to stay.




The Dead Sea, Jordan

 **Holiday Inn Dead Sea, The Dead Sea**  
Breakfast is included

At leisure

**Wednesday 30  
May 2012**

 **Holiday Inn Dead Sea, The Dead Sea**  
Breakfast is included

**Thursday 31  
May 2012**

#### **THE DEAD SEA TO QUEEN ALIA INTERNATIONAL AIRPORT, AMMAN**

*transfer in shared vehicle with driver only*

You will be collected from your hotel and transferred to Queen Alia International Airport.

#### **AMMAN TERMINAL: 2 TO LONDON HEATHROW TERMINAL: 1**

British Midland flight - Flight No: BD 914 - Dep: 0820 - Arr: 1200 - (same day) - Duration: 05hr 40min; Class: Economy Class; Non-stop flight;

Please note: flight schedules for 2012 are not yet published so times are subject to change

#### **IMPORTANT NOTES**

- Flight times and the daily order of sightseeing are subject to change.
- Transfer times are approximate and subject to local conditions at the time of travel.
- All flight times are local.

# ACCOMMODATION INFORMATION

Your accommodation is described on the following pages. Please do not hesitate to call us if you require any further information about any of the properties. We classify accommodation into the following categories. These are for your guidance only, they are based on the opinions of our staff and are therefore quite subjective.

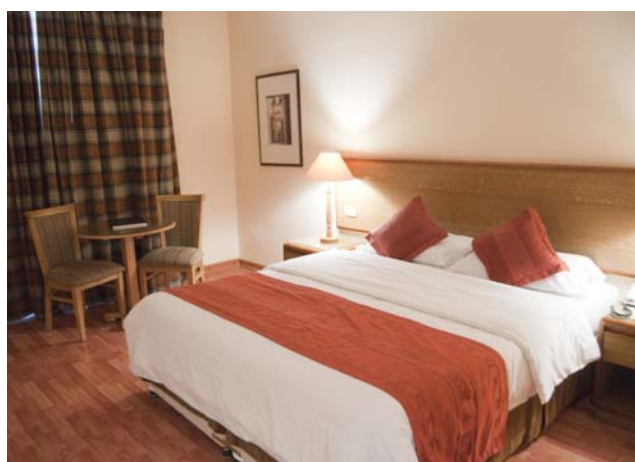
## OUR ACCOMMODATION GRADING SYSTEM

<b>Basic:</b>	Very primitive accommodation where we are not aware of anything better.
<b>Simple:</b>	Clean and simple but limited facilities.
<b>Medium:</b>	A good standard of accommodation, reasonable range of facilities.
<b>First Class:</b>	A high standard of accommodation with a wide range of facilities.
<b>Deluxe:</b>	Superb accommodation with facilities and service to match.
<b>Opulent:</b>	The world's most unashamedly luxurious hotels and resorts.

## AL QASR METROPOLE, AMMAN

### *Medium*

Formerly known as the Howard Johnson, the Al Qasr Metropole has a superb central location in the Shmeisani business district of Amman, making it a practical and inexpensive base from which to see the main sights of the city. The hotel has recently undergone extensive renovations to modernise and improve the rooms, restaurants and public areas. Although the rooms are a little smaller than in some of the more well known hotels in Amman, they are perfectly comfortable and have all of the facilities you will need. The Al Qasr also has an unpretentious, relaxed atmosphere which makes it a good value choice for a short stay in the city.



Bedroom at Al Qasr Metropole, Amman



Al Qasr Metropole, Amman



## BEIT ZAMAN, PETRA

### *Medium*

Situated 2km from Petra in the neighbouring village of Wadi Musa, Beit Zaman is a carefully restored 19th century village designed to afford guests a high level of comfort away from the busy day's sightseeing. The very nature of the hotel's history means that it abounds with character, and each of the 129 rooms and suites possess much of the original stonework, while modern touches give the rooms a comfortable finish. The location means that the sunsets here can be striking over the valley, and the open areas are extremely pleasant, with the highlights including a covered swimming pool.



Beit Zaman, Petra

## UTA CAMP, WADI RUM

### *Simple*

With a great location roughly 15 kilometres into the desert from the visitors centre, this private camp is the best base from which to enjoy Wadi Rum's stunning, remote landscapes. There are a couple of small, permanent structures sheltered by one of the Wadi's distinctive orange outcrops. One of these is the traditional Bedouin dining tent, where tasty home made meals and more simple breakfasts are served, and the other is a shared toilet and shower block, imaginatively built into the rock face. All other facilities are moveable and depend entirely on the number of guests, with accommodation in small but cosy white tents with single beds.

Although the facilities are relatively simple, there are few more special places to stay in Jordan. At night the sky is a blanket of twinkling stars and the total silence when you retire to your tent is a stark contrast to the noise and bustle elsewhere in the Middle East. Waking up to the sun rising over an empty, tranquil desert is a remarkable experience that will leave you refreshed and enthused for the rest of your itinerary.

The maximum number of guests at the site will be 16.



UTA Camp, Wadi Rum



UTA Camp, Wadi Rum

## FEYNAN LODGE, DANA NATURE RESERVE

### *Simple*

Feynan Lodge is newly opened, and is a superb lodge in many ways. It is wonderfully remote and set amidst stark rocky desert, so your sense of getting away from the world is remarkable. It has also been superbly designed - cool shady areas offer inviting spots to absorb the silence and solitude, while the rooms are spacious and comfortable. And finally, it is very eco-friendly. All the materials used are traditional local materials, and the adobe walls add to the atmosphere. All power is solar generated and in the evenings, everything is candle-lit. Although it's not the easiest place to get to (part of its attraction!), being a five hour hike from Dana Village, or 8km off road jeep drive from the Dead Sea - Aqaba Highway, it is absolutely worth the effort for one of the most unique and special hotels in the whole Middle East region.

Please note that the RSCN do not serve alcohol in their reserves.

### **Responsible Tourism Policy**

*Wild Jordan develops RSCN's (Royal Society for the Conservation of Nature) eco tourism policy in protected areas of Jordan and has constructed lodges and campsites in several different regions. These eco developments all feature high insulation (to keep interiors cool), solar hot water systems and the use of local traditional building materials. They provide an important source of income for biodiversity protection in the country; in 2007 the income generated by tourist visits to RSCN sites was over 45% of the annual conservation costs and supported hundreds of local jobs. This employment in turn provides an alternative to harmful land uses such as grazing and hunting.*

*The Feynan Lodge is the more advanced of the Wild Jordan properties and, as well as sourcing traditional local building materials, the lodge also uses solar electricity in the bathrooms and kitchens and in the evenings, everything is candle-lit.*

## DAN BOUTIQUE, JERUSALEM

### *Medium*

Situated to the south of the Old City and overlooking Mt Zion, the Dan Boutique hotel is within walking distance of many of Jerusalem's ancient sites. The hotel has 129 rooms and suites, and many have good views across the valley to Mt Zion.

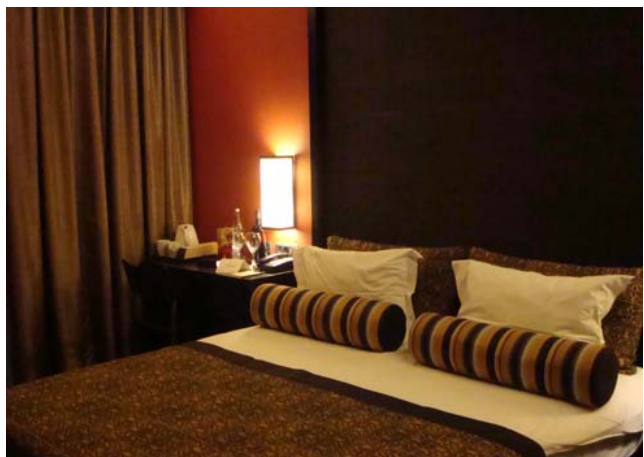
Although the hotel is slightly on the large side for a boutique property, the rooms themselves have been recently refurbished. They are decorated in a modern style, but with characterful twists here and there, such as oriental style wall lamps and Middle Eastern rugs. Adjoining the small gym area, there is a small terrace and sundeck that has great views to Dormition Abbey, and a bar on the ground floor that is a welcome sight after a hard day exploring the city!



Lounge, Feynan Lodge, Dana Nature Reserve



Standard Room, Feynan Lodge, Dana Nature Reserve



Standard room at the Dan Boutique, Jerusalem



## HOLIDAY INN DEAD SEA, THE DEAD SEA

### *Medium*

Opened in 2009, the Holiday Inn is a large complex that provides an excellent base from which to enjoy the Dead Sea. There are 202 rooms in total, with four adult swimming pools on different tiers gradually leading down to the private beach. The style throughout is clean, contemporary and colourful without being overly fussy. It is an excellent hotel for families and the beach is possibly the best of any of the Dead Sea hotels.

Each of the spacious, modern rooms have flat screen televisions, en suite bathrooms with a bathtub, and balconies looking out to the pool (or sometimes the Dead Sea itself). There are also 15 suites, with a separate sitting room and two bathrooms and balconies. There is a spa and gym, and wireless internet connection is free all around the hotel. The hotel is ideally suited for families, or for couples looking for a bit of R&R at the Dead Sea.



Holiday Inn, The Dead Sea

## KEMPINSKI ISHTAR DEAD SEA, THE DEAD SEA

### *(Upgrade Option)*

### *Deluxe*

The latest addition to the hotels of the Dead Sea, the Kempinski Ishtar brings breathtaking design and modern luxury to Jordan. The rooms are exquisite, replete with facilities that go a step beyond its rivals. Guests are welcome to use the complimentary mini-bar for soft drinks and beers, while DVD players are available without charge for those seeking a quiet evening.

The array of carefully-sculpted infinity pools are a delight, the beach has been built up with fine sand from the Red Sea and the spa is the largest in the Middle East. All rooms and suites benefit from stunning views of the Dead Sea with spacious patios or balconies- the perfect place to enjoy the Dead Sea's dramatic sunsets at the lowest point on earth.

Our opinion: The Kempinski is unlike any other resort hotel on the Dead Sea, or indeed in Jordan as a whole. Attention to detail is superb, and the setting of this hotel is spectacular. Although there seem to be a few teething problems, the facilities and location make this a great choice and will be even better with the opening of the spa later this year.



Kempinski Ishtar Dead Sea, The Dead Sea



Superior Room, Kempinski Ishtar Dead Sea, The Dead Sea

# GENERAL INFORMATION

## Travel insurance

It is advisable to take out your travel insurance at the time of booking your trip as cover will commence for pre-departure cancellation from the policy issue date. This will, therefore, provide cover should you have to cancel your trip for an insured reason such as illness or serious accident.

We strongly recommend that you and all members of your party are adequately insured, protecting against unforeseen circumstances that could otherwise spoil your travels. Cover should include medical expenses and repatriation in the event of accident or illness. In addition, we strongly recommend that you have cover for personal belongings, delay at your outward or homeward point of departure, personal liability, overseas legal expenses and cancellation. If you are undertaking any sports or adventurous activities, including trekking, on your trip you should also make sure that your policy covers these. Please also ensure you read the policy conditions and exclusions.

The type of trips we create and the requirements of Audley clients vary greatly. We have therefore listed below a number of providers who offer policies which may suit these varying requirements. You can find a more comprehensive list, including links to the providers' websites, at [www.audleytravel.com/insurance](http://www.audleytravel.com/insurance). Other providers and policies are also available. We are unable to provide you with more detailed information and you should contact the provider concerned directly for this. **Please note, this is general information only. We are not providing any specific advice on travel insurance or recommending any particular policy or insurer.**

### Trips of up to £5,000 pp

A large number of companies offer insurance policies which include cover for cancellation charges of up to the full holiday cost. American Express (0800 028 7573), Insure and Go (0844 888 2787) and the Post Office (0800 294 2292) all have policies that you may like to consider. This information can also be found at [www.audleytravel.com](http://www.audleytravel.com) with links to the insurers' websites.

### Trips over £5,000 pp

It can be more challenging to get insurance which includes cover for cancellation charges of up to the full holiday cost for higher value trips. A number of providers do, however, offer such policies.

Bowlin Insurance (01832 272 888) offers a totally bespoke service, tailoring a policy to your specific requirements, American Express (0800 028 7573) offer cancellation cover up to £12,500 per person and Insure and Go (0844 888 2787) offer cancellation cover up to £7,500 per person. This information can also be found at [www.audleytravel.com](http://www.audleytravel.com) with links to the insurers' websites.

### Clients over 65 years of age

Many companies now offer cover to people over 65 years of age. However, if you are finding it difficult to get cover you could try Age UK (0845 600 3348) or Saga (0800 015 8055) both of whom currently have no upper age limit on their policies. See also the companies referred to under pre-existing medical conditions below. This information can also be found at [www.audleytravel.com](http://www.audleytravel.com) with links to the insurers' websites.

### Pre-existing medical conditions

If you have a pre-existing medical condition, there are a number of companies that may be able to help you. P J Hayman / Free Spirit (0845 230 5000) will consider most pre-existing medical conditions and they have no upper age limit on single trip policies. Age UK (0845 600 3348) and Insure and Go (0844 888 2787) will also consider a number of pre-existing conditions and may be able to help. Cancer Travel Insurance Services (0845 880 0163) specialise in travel insurance for people with non-terminal cancer and have no upper age limit on their policies. This information can also be found at [www.audleytravel.com](http://www.audleytravel.com) with links to the insurers' websites.

### Non-UK residents

If you are not a UK resident you will usually need to get insurance in your country of residence. Some insurance companies, such as Columbus Direct (0870 033 9988), however, will consider policies for non-UK residents. This information can also be found on our website [www.audleytravel.com](http://www.audleytravel.com) with links to the insurers' websites.

Once you have a travel insurance policy in place, please let your specialist know who your provider is and your policy number.

The above information is provided in good faith and is correct to the best of our knowledge as at July 2011. No liability is, however, accepted for any errors and all information must be checked directly with the insurance provider.

## Financial security



We hold an Air Travel Organiser's Licence (ATOL) issued by the Civil Aviation Authority (ATOL number

4817). When you buy an ATOL protected air inclusive holiday\* from us, you will receive a confirmation invoice from us (or via our authorised agent through which you booked) confirming your arrangements and your protection under our ATOL. In the unlikely event of our insolvency the CAA will ensure that you are not left stranded abroad and will arrange to refund any money you have paid to us for an advance booking.

\*The air inclusive holidays we arrange are ATOL protected providing either the person who pays for the booking is present in the UK when the booking is made or the first leg of any flight or flights we arrange for you commences in the UK. For further information, visit the ATOL website at [www.atol.org.uk](http://www.atol.org.uk)

Not all holiday or travel services offered and sold by us will be protected by the ATOL scheme. Those arrangements which are not protected by our ATOL are covered by insurance arranged by AmTrust Europe Ltd. This insurance means your money will be refunded or you will be returned to the starting point of your contracted arrangements if already abroad in the unlikely event of our being unable to provide your holiday due to our insolvency. Please ask us to confirm what protection will apply to your booking.

## Health

It is essential that you see your GP or a travel clinic before booking your trip and before travelling to make sure that you have taken all the necessary health precautions. Some vaccinations require more than one visit with a period of weeks between injections. You should visit your GP at least six weeks before departure. For up to date medical advice you may wish to call the Medical Advisory Service for Travellers Abroad (MASTA).

### MASTA Traveller's Health Line

Before travelling abroad, you can telephone 0906 550 1402 (premium rate call 60p/minute) to obtain a 'Health Brief' specifically tailored to your journey. Your brief will give information about immunisation and malaria as well as any Foreign Office advice and the latest health news. Their lines are open 24 hours a day, 7 days a week. MASTA, 52 Margaret Street, London W1W 8SQ. Internet: [www.masta-travel-health.com](http://www.masta-travel-health.com)

Other health information services are available, including [www.nathnac.org/](http://www.nathnac.org/) and [www.fitfortravel.nhs.uk](http://www.fitfortravel.nhs.uk)

#### Deep vein thrombosis (DVT)

The majority of international airlines now issue advice on how to lessen the risk of DVT, however, if you have any concerns, we recommend that you consult your doctor.

#### Pre-existing medical conditions/Disabled passengers

It is essential that you advise us before booking if you have any disability or pre-existing medical condition which may affect your holiday or any special requirements as a result of any disability or medical condition (including any which affect the booking process) so that we can assist you in considering the suitability of the arrangements and/or making the booking.

Full details must be confirmed in writing at the time of booking and whenever any change in the condition or disability occurs. You must also promptly advise us if any medical condition or disability which may affect your holiday develops after your booking has been confirmed. The nature of many of the destinations featured within our brochures means that in the majority of cases they are unsuitable for those who are wheelchair bound or have a lack of mobility. We will be delighted to discuss the feasibility of creating a tailor-made itinerary for you that takes into consideration your level of mobility.

On our escorted group tours the Tour Leader is, unfortunately, unable to offer additional assistance to passengers with limited mobility and all such assistance will need to be provided by whoever the passenger is travelling with. We may request that you provide a letter from your doctor confirming your fitness to travel.

#### High altitude

Your itinerary may include sections where the altitude exceeds 10,000 feet (3,048 metres). If you suffer from circulation, heart or respiratory problems we advise that you consult with your doctor before confirming your booking.

#### **Smoking**

Airlines do not permit smoking on the aircraft. At the request of the majority of our clients we do not allow smoking on any form of transport used for our

escorted group tours. Stops are regularly made where you will be able to smoke. For smokers travelling on a tailor-made tour we request that you check with your driver or guide whether smoking is permitted in the vehicle.

#### **Health and safety standards**

Each country has its own regulations and enforcement levels relating to health and safety standards. These do not always match the very high standards we are used to in the UK. We therefore recommend that you follow a few precautionary safety procedures. Always check where the nearest fire exit is and how to raise the fire alarm. Do not enter a swimming pool before checking the water depth first. For more suggestions please see the Important Information section in your Travel Organiser.

#### **Passport and visa information for British Citizens**

Passengers must hold a passport which is valid for at least six months following the return date of your holiday. British passport holders (full British Citizens) currently require visas, in advance of travel, for the following destinations featured in our brochures: Australia, Bhutan, Burma, China, Cuba, Gabon, India, Iran, Kenya, Kyrgyzstan, Madagascar (not necessary for 2011 travel), Mongolia, Mozambique, Nepal (also available on arrival), Libya, Pakistan, Papua New Guinea (also available on arrival), Russia, São Tomé & Príncipe, Syria\*, Tanzania, Tibet, Uganda, Uzbekistan, Vietnam\*\*, Zambia and Zimbabwe.

Visas may be required for other countries but can be arranged on arrival.

\*Visitors to Syria can obtain a visa on arrival but we will need to forward your passport details prior to travel.

\*\*Visitors to Vietnam can obtain a visa on arrival but require a letter of authorisation from ourselves – please speak to your specialist.

We are normally able to obtain visas on your behalf, please ask for details at the time of booking. Non-British passport holders should check with the relevant embassies as visa requirements may be different to those of British passport holders. It is your responsibility to ensure you have the correct documentation and visa stamp(s). Failure or inability to obtain all required visas for whatever reason does not entitle you to cancel without paying the applicable cancellation charges.

#### **Travel advice**

The Foreign and Commonwealth Office Travel Advice Unit monitors all overseas destinations and offers safety advice to British travellers. You can contact the service on 0845 850 2829 or visit [www.fco.gov.uk/travel](http://www.fco.gov.uk/travel)

#### **Flights and airlines**

The difference between a direct flight and a non-stop flight can cause confusion. To clarify, on a direct flight no change of aircraft is scheduled but touchdowns will be made en route either to refuel or to board or disembark passengers. On non-stop flights no change of aircraft is required and no stops are made en route. Virtually all of the flights that we use are direct and many are non-stop. Exact details will be given with your itinerary.

#### Premium Economy, Business and First Class

If you require business or first class flights these can be arranged on most airlines at very competitive rates. Premium economy can be arranged on certain airlines, please call us for details.

#### Specific seat requests

We will do all we can to try to reserve a specific seat for you, if you have a preference. However, whilst airlines may allow us to request seats, they will not guarantee any specific seat reservation. If this is important to you, it is always best to arrive for your flight early, regardless of having made this request in advance. Please make it clear on your booking form if you have a specific request.

#### Flight amendments

We generally use special 'inclusive tour' fares when we purchase your air tickets from the airlines. While these fares are very good value they are inflexible in terms of changes and offer no refunds once the tickets are issued. Once your flight is confirmed the airlines will charge an amendment fee or insist on the purchase of a completely new ticket if you make changes.

#### Internal flights

Smaller local airlines are often more likely to change their schedule at short notice. We will endeavour to inform you of any changes in advance of travelling but this may not always be possible.

#### Frequent Flyer Clubs

If you collect points through any of the airline frequent flyer clubs please provide



your membership details on the booking form and we will ensure that these are recorded against your flight reservation. Please note that on some of our specially negotiated 'inclusive tour' fares are not always awarded.

#### **Carbon off-setting**

Please let your specialist know if you would like to carbon offset your flights. We work with Friends of Conservation and all offsetting payments are donated through them. For more details visit [www.audleytravel.com/offset](http://www.audleytravel.com/offset). The suggested amounts are in line with the DEFRA's current guidelines for the cost per tonne of carbon. If you wish to ensure that Gift Aid is included please donate directly via [www.audleytravel.com/offset](http://www.audleytravel.com/offset)

#### **UK airport hotels, car parking and lounges**

We are able to arrange airport hotel accommodation, car parking, meet and greet services and airport lounge access in the UK, subject to availability. To arrange any of these services please call our Reservations Administration Team on 01993 838 051.

#### **Hotel information**

There is frequent confusion over the terminology used for bed arrangements in hotel rooms. A 'double' is recognised as meaning a room with a double bed, this may be two single beds pushed together. A 'twin' is a room with two single beds. Please note that all rooms are allocated at the discretion of the hotel and cannot be guaranteed.

#### Single rooms

Single rooms tend to be smaller than double or twin rooms, however, many hotels do not have single rooms, in which case you will be allocated a twin or double room.

#### **Special dietary requirements**

Special diets should be requested on the booking form, however, it is unrealistic to expect special diets to be catered for in some of the destinations we feature. We will advise the hotels and airlines of your request but we cannot guarantee their availability.

#### **Brochure and itinerary accuracy**

We thoroughly check all the information that is included within our brochures and individual tour itineraries, however, changes do occur and errors are occasionally made. Airlines may change

their schedules, roads may close and government regulations may alter. Should there be any changes to the travel arrangements you have booked we will do our best to keep you informed of the situation prior to departure.

#### **Travel in the developing world**

Many of our destinations are in the developing world where attitudes, infrastructure, priorities, lifestyles and cultures are very different from our own. This is often the very reason to visit the destination but certain aspects may be frustrating. We always advise that the first thing you should pack is your sense of humour. This can prove invaluable when travelling over rougher roads, waiting for a delayed aircraft and communicating with hotel staff whose first language is not English.

#### **Data Protection Act**

We will hold your name, address and any other details you supply us with on our database. This information will be used to make your travel arrangements and to send you information about Audley Travel. In order to make your travel arrangements we will need to pass your details to companies and individuals outside the EC where less stringent data protection controls may be in place. We will not pass on your details to third parties for any other purposes.

#### **AITO Quality Charter: The Association of Independent Tour Operators**

AITO is the association for independent and specialist holiday companies. Our member companies, usually owner-managed, strive to create overseas holidays with high levels of professionalism and a shared concern for quality and personal service. The Association encourages the highest standards in all aspects of tour operating.

#### Exclusive membership

AITO sets criteria regarding ownership, finance and quality which must be satisfied before new companies are admitted to membership. All members are required to adhere to a Code of Business Practice which encourages high operational standards and conduct.

#### Financial security

An AITO member is required to protect money paid by customers to the member for any holiday sold under the AITO logo. This protection applies to customers who are in the UK at the

time of booking or to overseas customers who have booked directly with the member. Members have to comply with UK Government Regulations in this respect. Members submit details of their bonding and guarantee arrangements to the Association on a regular basis.

#### Accurate brochures and web sites

All members do their utmost to ensure that all their brochures and other publications, print or electronic, clearly and accurately describe the holidays and services offered.

#### Professional service and continual improvements

All members are committed to high standards of service and believe in regular and thorough training of employees. Members continually seek to review and improve their holidays. They listen to their customers and always welcome suggestions for improving standards.

#### Monitoring standards

AITO endeavours to monitor quality standards regularly. All customers should receive a post-holiday questionnaire the results of which are scrutinised by the Association.

#### Responsible tourism

All members acknowledge the importance of AITO's Responsible Tourism guidelines, which recognise the social, economic and environmental responsibilities of tour operating. Those demonstrating their achievements beyond the pure acceptance of this principle are recognised by the award of 2 to 5 star status.

#### Customer relations

All members endeavour to deal swiftly and fairly with any issues their customers may raise. In the unlikely event that a dispute between an AITO member and a customer cannot be settled amicably, AITO's low-cost Independent Dispute Settlement Service may be called upon by either side to bring the matter to a speedy and acceptable conclusion. Audley is a member of the Association of Independent Tour Operators. To contact the Association, visit [www.aito.co.uk](http://www.aito.co.uk) or call 020 8744 9280.